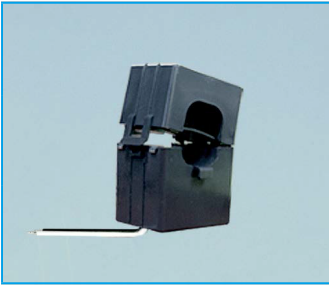


# SPECIFICATION



## SPLIT TYPE A.C CURRENT TRANSFORMER

Model No ; **SST-16**

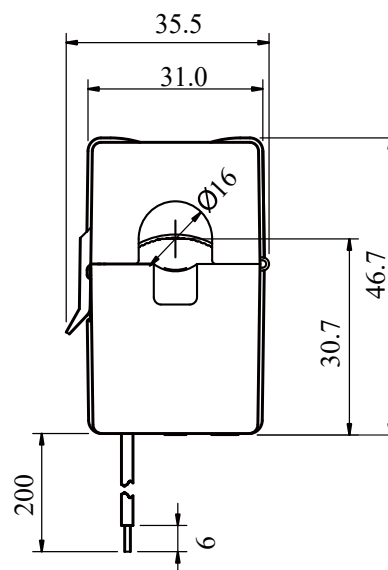
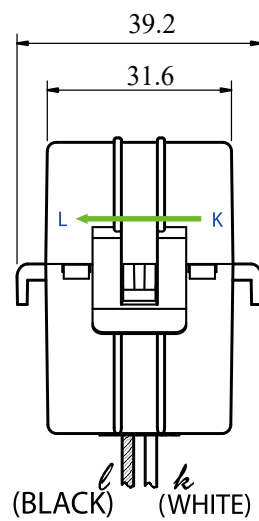
Type ; Split Type

### ELECTRICAL PROPERTIES

(at 60Hz, Burden 50Ω以下)

|                     |                  |
|---------------------|------------------|
| MODEL NO.           | SST-16           |
| Rated Current       | 0.01A~100A       |
| Max. Current        | 200A連續           |
| Current Ratio       | 3,000:1          |
| Standard Accuracy   | Class 1%         |
| Linearity Error     | $\leq \pm 1\%$   |
| 保護素子                | 內藏               |
| Operating Frequency | 50 ~ 20KHz       |
| Operating Temp.     | -40°C ~ 85°C     |
| Hi-Potential        | A.C 2.2KV, 1分間   |
| 難燃Grade & 環境規格      | UL94V-0 & RoHS對應 |

### DIMENSION



(Unit : mm)

